



Faculty Access

Beginning in July, we will be providing all faculty members with access to all Citrix-based iLab applications. Previously, access was limited by application to an instructor who was scheduled to teach a course (based on information in OSS).

This new method will provide access to more applications, allowing instructors additional preparation time to familiarize themselves with applications they

may need to teach in the future.

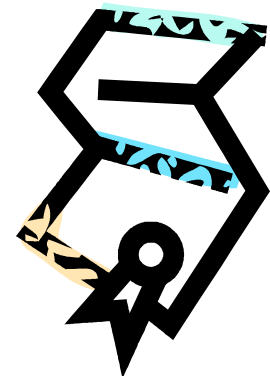
Faculty accounts will now be created/updated weekly, using information in FIS (FT/PT faculty, staff who teach, and adjuncts). This will ensure that new instructors are quickly provided with access to all Citrix-based applications. We will also be removing access for instructors who have left DeVry.

When new applications have been added to the Citrix environment, they will be added to faculty iLab Application group after Academics has completed their testing and provided sign-off. This will ensure that any environmental problems have been resolved before granting access to faculty who may be unfamiliar with using the application in the Citrix environment.

Need Training? Please contact your Program Dean for more information.

Course Certification

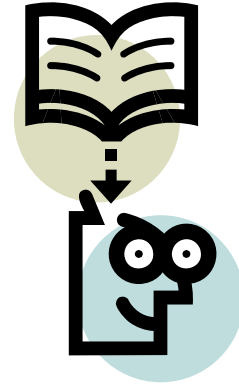
When applications are added to the Citrix environment, they are first validation tested by the Academic Computing team. Academic Computing then works with Lab Architects (under the direction of Program Directors and Curriculum Managers) who test the usage of the application for a particular course. Once it is determined that the lab activities can be completed in the Citrix environment, Academics provides a signoff and the course is considered "iLab Certified".



Remember that the application may not have been tested for every course in which it is used. If you run into problems with the way the application is configured, check to see if the application has been certified for use in your course. Academic Program Directors and Curriculum Managers continue to work on defining and testing curricula in the Citrix environment. We highly recommend that faculty test labs before presenting or assigning them to students.

Student Accounts

Also in July, we will be changing the way we create student accounts. Previously, we granted student access to applications based on course enrollment and delivery mode. Our new model simplifies the provisioning process and significantly reduces student access issues we've encountered in the past based on unidentified delivery mode needs or co-sits. In the new model:



1. All students will have access to the most commonly used applications across programs, such as Microsoft Office, Project and Visio.
2. Students will be granted access to additional applications based on their enrollments. For example, a student enrolled in any CIS course will have access to the entire set of programming applications. The attached chart defines the application groups.
3. Students will only lose access to these groups of applications if they leave DeVry altogether.
4. There will no longer be any differentiation based on delivery mode, which supports our commitment to a standardized mix-and-match experience.

Due to additional costs or more customized setup requirements, the new process does not apply to: Lab Mentors, Element K, web server space, and Oracle. There are also some specialty applications where student access may be more restrictive due to licensing limitations.



New Labs

The following new iLabs will be available in July:

- Eclipse (Java IDE)
- Visual Studio 2005
- Oracle 10g

In order to let faculty become more familiar with Office 2007, Visio 2007 and Project 2007, we will be rolling out these applications to faculty in July. Rollout of these applications to students will be in November. iLabs will provide access to both versions of these products until Academics determines to end-life the 2003 products.